



# MONTHLY MEMBERSHIP PROGRESS REPORT

District 202 J

Results as of: 09/30/2018

GMT: CLIFFORD HEYWOOD

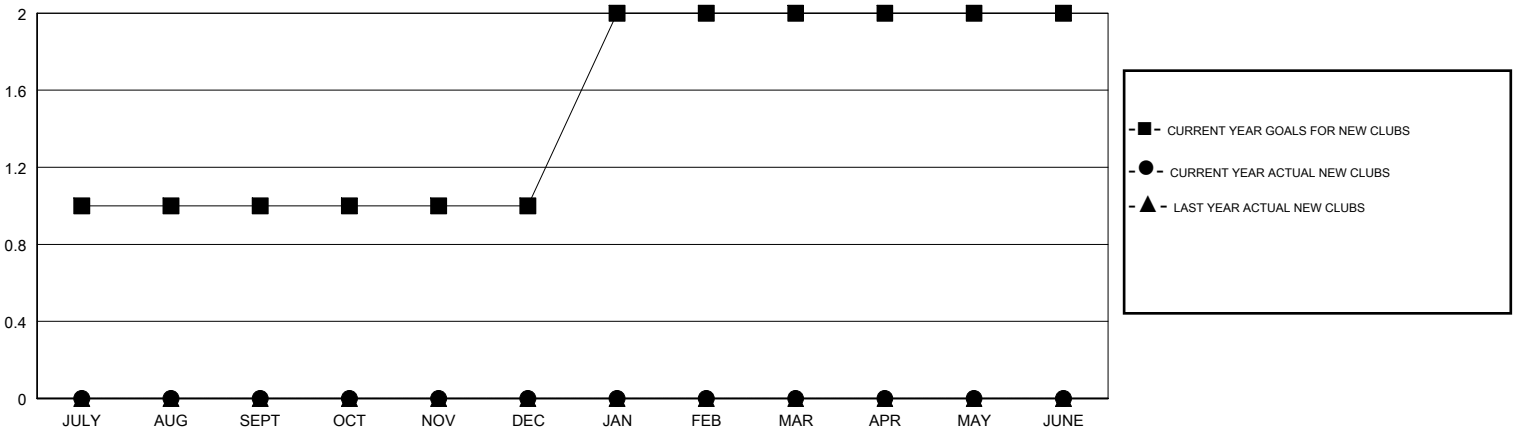
LOCATION NEW ZEALAND

GMT CA

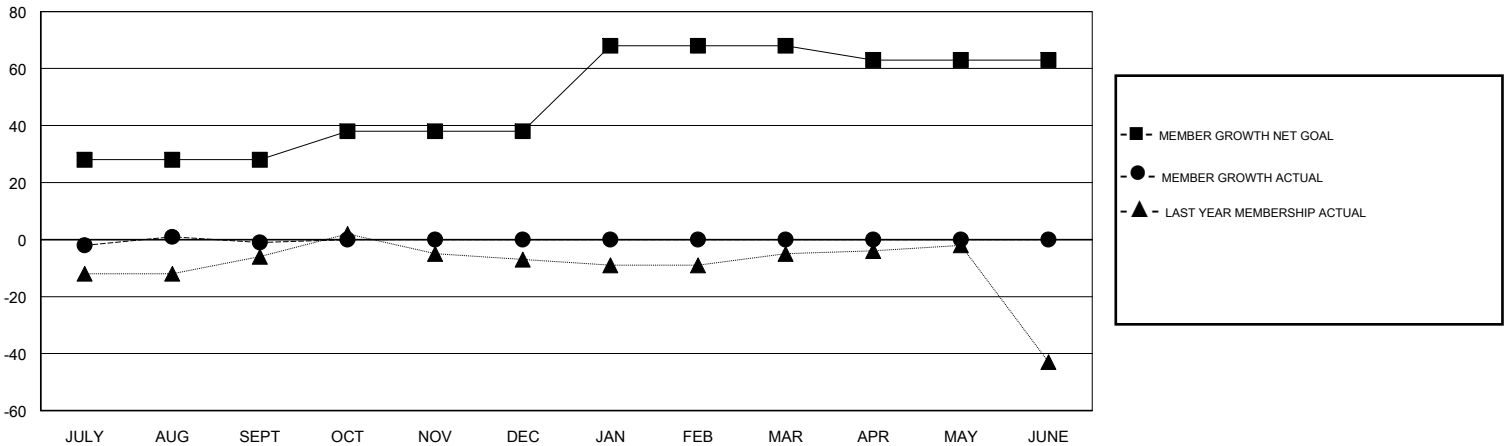
Clubs			
RESULTS FOR 2018-2019			
QUARTER	NEW CLUB GOAL	NEW CLUBS	DROPPED CLUBS
JULY/AUG/SEPT	1	0	1
OCT/NOV/DEC	0	0	0
JAN/FEB/MAR	1	0	0
APR/MAY/JUNE	0	0	0

Members			
RESULTS FOR 2018-2019			
QUARTER	MEMBER GROWTH NET GOAL	MEMBER GROWTH ACTUAL	DROPPED MEMBERS ACTUAL (including transfers)
JULY/AUG/SEPT	28	25	19
OCT/NOV/DEC	10	0	0
JAN/FEB/MAR	30	0	0
APR/MAY/JUNE	-5	0	0

GOALS AND ACTUAL NEW CLUBS CUMULATIVE



GOALS AND ACTUAL MEMBERS CUMULATIVE



DROPPED CLUBS: 1	10 CLUBS OF 38 ADDED 1 OR MORE NEW MEMBERS	<u>GENDER DISTRIBUTION</u> MALE 963 (77.16%) FEMALE 285 (22.84%) Women Percentage Fiscal Year Goal: 25%
DROPPED MEMBERS	<a href="#">CLICK HERE FOR CUMULATIVE MEMBERSHIP DATA</a>	TOTAL FAMILY UNIT MEMBERS 46
DECEASED 4		FAMILY MEMBERS PAYING HALF DUES 23
CLUB CANCELLED 0		
OTHER 14		
TOTAL 18		